

ECG analysis report

Generated at 2020-06-30 09:23:08

Patient data

ID 2020-06-24_07-slras03dni

Recording details

Start time 2020-06-24 07:00:49

End time 2020-06-27 15:10:11

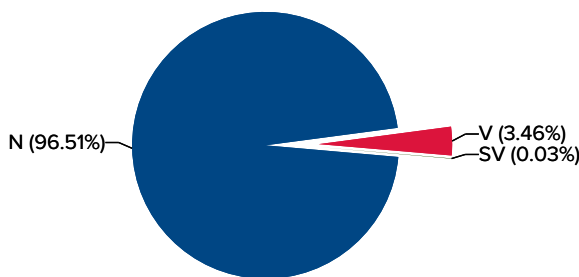
Duration 3 d 08 h 09 min 22 s

Nondiagnostic part 4.05%

Recording summary

Heart rate		Ventricular		Supraventricular	
Total beats	300148	Total V beats	10383	Total SV beats	85
Average HR	66 bpm	Couplets	158	Couplets	2
Slowest HR	51 bpm	Bigeminies	430	Bigeminies	0
Fastest HR	107 bpm	Trigeminies	23	Trigeminies	0
Sinus tachycardias	18	Salvos	0	Salvos	0
Sinus bradycardias	2024	Tachycardias	0	Tachycardias	0
Pauses	0	Bradycardias	0	AFIB/AFL	0.00%

Beats



Rhythms



Description

The recording was 3 d 08 h 09 min 22 s in duration. 95.95% of the signal was of sufficient quality for analysis. The average heart rate was 66 bpm, the fastest heart rate was 107 bpm at 07:16 (day 1) and the slowest heart rate was 51 bpm at 11:38 (day 2).

Rhythm analysis has detected 18 episodes of sinus tachycardia. The longest sinus tachycardia was 1 min 06 s and started at 10:39 (day 4). Rhythm analysis has detected 2024 episodes of sinus bradycardia. The longest sinus bradycardia was 8 min 22 s and started at 09:39 (day 2). No pause longer than 2 seconds was found in the signal.

10383 ventricular beats were detected. Rhythm analysis has detected 23 ventricular trigeminies, 430 ventricular bigeminies and 158 ventricular couplets.

85 supraventricular beats were detected. It has been recorded: 2 supraventricular couplets.

Hourly summary table

Time		Heart rate					Ventricular		Supraventricular		Nondiagnostic part
From	To	Total beats	Average HR	Min HR	Max HR	Pauses	V beats	V couplets	SV beats	SV couplets	
07:00	08:00	5084	88 bpm	78 bpm	107 bpm	0	63	0	0	0	2.04%
08:00	09:00	4365	75 bpm	54 bpm	100 bpm	0	12	0	0	0	2.46%
09:00	10:00	4295	74 bpm	54 bpm	94 bpm	0	3	0	2	0	3.74%
10:00	11:00	2970	57 bpm	54 bpm	66 bpm	0	2	0	0	0	13.43%
11:00	12:00	3001	56 bpm	54 bpm	59 bpm	0	1	0	0	0	10.58%
12:00	13:00	3439	60 bpm	53 bpm	76 bpm	0	5	0	0	0	3.47%
13:00	14:00	3497	62 bpm	55 bpm	77 bpm	0	5	0	1	0	5.09%
14:00	15:00	3560	62 bpm	58 bpm	67 bpm	0	8	0	0	0	3.46%
15:00	16:00	3456	68 bpm	60 bpm	87 bpm	0	43	0	0	0	13.69%
16:00	17:00	3699	63 bpm	56 bpm	75 bpm	0	18	0	0	0	1.93%
17:00	18:00	3725	64 bpm	60 bpm	73 bpm	0	23	0	1	0	2.35%
18:00	19:00	4374	74 bpm	59 bpm	99 bpm	0	39	0	1	0	1.22%
19:00	20:00	5093	87 bpm	62 bpm	102 bpm	0	19	0	0	0	2.44%
20:00	21:00	1504	64 bpm	57 bpm	79 bpm	0	5	0	0	0	60.41%
21:00	22:00	3500	61 bpm	55 bpm	80 bpm	0	29	0	4	0	3.09%
22:00	23:00	3450	58 bpm	56 bpm	63 bpm	0	53	1	2	0	0.00%
23:00	00:00	3599	62 bpm	55 bpm	78 bpm	0	88	1	5	0	1.60%
2020-06-25											
00:00	01:00	3985	69 bpm	63 bpm	75 bpm	0	376	2	2	0	0.59%
01:00	02:00	3856	68 bpm	60 bpm	79 bpm	0	343	5	1	0	1.82%
02:00	03:00	3863	68 bpm	56 bpm	76 bpm	0	336	4	1	0	2.01%
03:00	04:00	3442	61 bpm	54 bpm	76 bpm	0	206	1	0	0	2.72%
04:00	05:00	3125	61 bpm	51 bpm	80 bpm	0	149	1	1	0	13.67%
05:00	06:00	3744	65 bpm	57 bpm	74 bpm	0	277	1	0	0	0.40%
06:00	07:00	3985	69 bpm	56 bpm	97 bpm	0	247	1	0	0	1.22%
07:00	08:00	3945	69 bpm	64 bpm	73 bpm	0	146	0	0	0	3.14%
08:00	09:00	3624	61 bpm	52 bpm	79 bpm	0	4	0	2	0	0.00%
09:00	10:00	3350	56 bpm	52 bpm	68 bpm	0	3	0	1	0	0.07%
10:00	11:00	3171	54 bpm	52 bpm	58 bpm	0	0	0	2	0	1.36%
11:00	12:00	3122	54 bpm	51 bpm	59 bpm	0	2	0	2	0	2.72%
12:00	13:00	3196	56 bpm	52 bpm	69 bpm	0	5	0	1	0	4.00%
13:00	14:00	3430	61 bpm	56 bpm	74 bpm	0	24	0	2	0	5.59%
14:00	15:00	3503	59 bpm	53 bpm	62 bpm	0	1	0	0	0	0.22%
15:00	16:00	3547	60 bpm	55 bpm	68 bpm	0	4	0	1	0	0.60%
16:00	17:00	3309	58 bpm	53 bpm	67 bpm	0	4	0	0	0	3.84%
17:00	18:00	3354	57 bpm	51 bpm	66 bpm	0	6	0	3	0	0.97%
18:00	19:00	3136	56 bpm	52 bpm	77 bpm	0	11	0	3	0	7.28%
19:00	20:00	2672	56 bpm	51 bpm	70 bpm	0	11	0	2	0	20.27%
20:00	21:00	3065	56 bpm	52 bpm	65 bpm	0	55	0	1	0	8.57%
21:00	22:00	3323	56 bpm	53 bpm	64 bpm	0	51	0	5	0	1.24%
22:00	23:00	3355	58 bpm	54 bpm	64 bpm	0	65	2	2	0	2.86%
23:00	00:00	3577	63 bpm	54 bpm	75 bpm	0	235	2	0	0	2.84%
2020-06-26											
00:00	01:00	3663	63 bpm	57 bpm	71 bpm	0	190	3	2	0	0.66%
01:00	02:00	4339	75 bpm	67 bpm	81 bpm	0	492	3	2	0	0.20%

Time		Heart rate					Ventricular		Supraventricular		Nondiagnostic part
From	To	Total beats	Average HR	Min HR	Max HR	Pauses	V beats	V couplets	SV beats	SV couplets	
02:00	03:00	4613	79 bpm	75 bpm	90 bpm	0	471	3	0	0	0.40%
03:00	04:00	4646	81 bpm	76 bpm	92 bpm	0	493	10	0	0	2.36%
04:00	05:00	4520	82 bpm	74 bpm	104 bpm	0	697	2	2	0	4.47%
05:00	06:00	4245	73 bpm	65 bpm	82 bpm	0	387	6	1	0	0.97%
06:00	07:00	4046	70 bpm	58 bpm	82 bpm	0	388	2	0	0	1.20%
07:00	08:00	4303	77 bpm	68 bpm	97 bpm	0	673	4	2	0	4.69%
08:00	09:00	4410	74 bpm	70 bpm	92 bpm	0	117	1	1	0	0.00%
09:00	10:00	3862	65 bpm	59 bpm	71 bpm	0	30	0	1	0	0.00%
10:00	11:00	3535	60 bpm	54 bpm	73 bpm	0	22	0	1	0	0.82%
11:00	12:00	3723	63 bpm	55 bpm	94 bpm	0	24	0	2	0	0.82%
12:00	13:00	4908	84 bpm	74 bpm	93 bpm	0	22	0	1	0	2.48%
13:00	14:00	3674	64 bpm	54 bpm	87 bpm	0	2	0	2	0	3.59%
14:00	15:00	3390	58 bpm	53 bpm	69 bpm	0	1	0	0	0	2.81%
15:00	16:00	3579	62 bpm	58 bpm	75 bpm	0	5	0	1	0	3.34%
16:00	17:00	3825	65 bpm	56 bpm	78 bpm	0	31	0	1	0	1.03%
17:00	18:00	3770	66 bpm	62 bpm	78 bpm	0	8	0	0	0	5.43%
18:00	19:00	4076	68 bpm	63 bpm	88 bpm	0	7	0	1	0	0.00%
19:00	20:00	3863	66 bpm	58 bpm	78 bpm	0	2	0	1	0	2.59%
20:00	21:00	3799	65 bpm	58 bpm	81 bpm	0	6	0	2	0	2.56%
21:00	22:00	3480	58 bpm	55 bpm	67 bpm	0	27	0	1	0	0.00%
22:00	23:00	3608	61 bpm	54 bpm	68 bpm	0	49	0	0	0	1.04%
23:00	00:00	4052	69 bpm	64 bpm	79 bpm	0	237	1	1	0	1.00%
2020-06-27											
00:00	01:00	4276	74 bpm	65 bpm	81 bpm	0	433	24	1	0	0.60%
01:00	02:00	3929	73 bpm	67 bpm	79 bpm	0	328	9	2	1	7.24%
02:00	03:00	4491	77 bpm	69 bpm	98 bpm	0	574	47	2	1	0.63%
03:00	04:00	4183	73 bpm	64 bpm	83 bpm	0	581	11	1	0	1.63%
04:00	05:00	4238	72 bpm	66 bpm	77 bpm	0	419	11	1	0	0.00%
05:00	06:00	3926	66 bpm	58 bpm	84 bpm	0	247	0	0	0	0.40%
06:00	07:00	3702	63 bpm	56 bpm	90 bpm	0	106	0	0	0	0.82%
07:00	08:00	4054	69 bpm	61 bpm	87 bpm	0	189	0	0	0	1.46%
08:00	09:00	4340	73 bpm	60 bpm	93 bpm	0	25	0	1	0	0.20%
09:00	10:00	4180	70 bpm	56 bpm	90 bpm	0	2	0	1	0	0.22%
10:00	11:00	4337	73 bpm	56 bpm	103 bpm	0	4	0	1	0	0.84%
11:00	12:00	3856	65 bpm	60 bpm	77 bpm	0	27	0	0	0	0.63%
12:00	13:00	3627	61 bpm	57 bpm	76 bpm	0	2	0	2	0	1.57%
13:00	14:00	3368	58 bpm	56 bpm	64 bpm	0	0	0	0	0	2.78%
14:00	15:00	1848	56 bpm	54 bpm	59 bpm	0	28	0	0	0	44.40%
15:00	15:10	574	58 bpm	54 bpm	67 bpm	0	60	0	0	0	0.00%

Rhythms by hour

Time		Sinus		Ventricular		Supraventricular		Nondiagnostic part
From	To	Bradycardia	Tachycardia	Bradycardia	Tachycardia	Tachycardia	AFIB/AFL	
07:00	08:00	0.00%	4.25%	0.00%	0.00%	0.00%	0.00%	2.04%
08:00	09:00	16.08%	0.74%	0.00%	0.00%	0.00%	0.00%	2.46%
09:00	10:00	21.71%	0.00%	0.00%	0.00%	0.00%	0.00%	3.74%

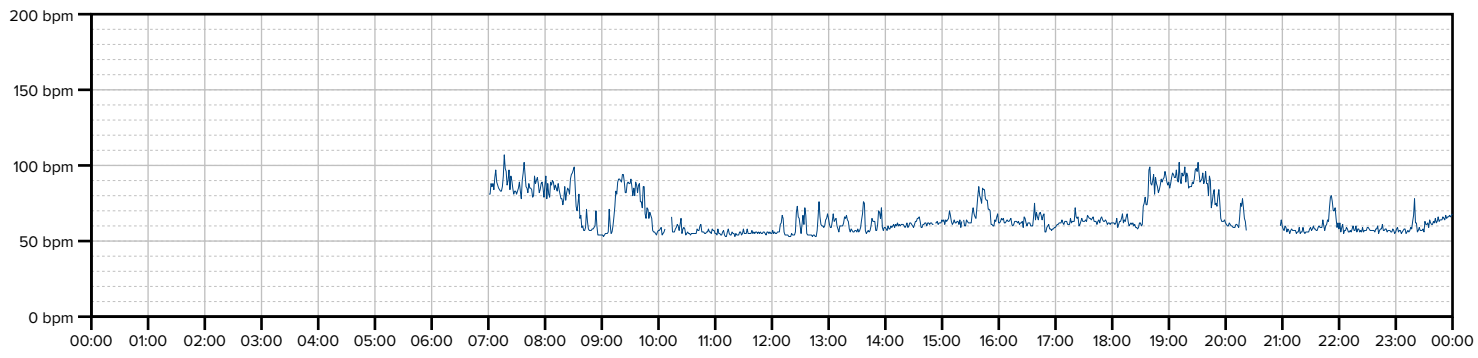
Time		Sinus		Ventricular		Supraventricular		Nondiagnostic part
From	To	Bradycardia	Tachycardia	Bradycardia	Tachycardia	Tachycardia	AFIB/AFL	
10:00	11:00	60.72%	0.00%	0.00%	0.00%	0.00%	0.00%	13.43%
11:00	12:00	80.05%	0.00%	0.00%	0.00%	0.00%	0.00%	10.58%
12:00	13:00	53.03%	0.00%	0.00%	0.00%	0.00%	0.00%	3.47%
13:00	14:00	29.44%	0.00%	0.00%	0.00%	0.00%	0.00%	5.09%
14:00	15:00	7.68%	0.00%	0.00%	0.00%	0.00%	0.00%	3.46%
15:00	16:00	0.00%	0.00%	0.00%	0.00%	0.00%	0.00%	13.69%
16:00	17:00	8.02%	0.00%	0.00%	0.00%	0.00%	0.00%	1.93%
17:00	18:00	0.32%	0.00%	0.00%	0.00%	0.00%	0.00%	2.35%
18:00	19:00	1.98%	0.00%	0.00%	0.00%	0.00%	0.00%	1.22%
19:00	20:00	0.00%	4.02%	0.00%	0.00%	0.00%	0.00%	2.44%
20:00	21:00	5.12%	0.00%	0.00%	0.00%	0.00%	0.00%	60.41%
21:00	22:00	48.10%	0.00%	0.00%	0.00%	0.00%	0.00%	3.09%
22:00	23:00	83.72%	0.00%	0.00%	0.00%	0.00%	0.00%	0.00%
23:00	00:00	35.34%	0.00%	0.00%	0.00%	0.00%	0.00%	1.60%
2020-06-25								
00:00	01:00	0.00%	0.00%	0.00%	0.00%	0.00%	0.00%	0.59%
01:00	02:00	9.03%	0.00%	0.00%	0.00%	0.00%	0.00%	1.82%
02:00	03:00	5.07%	0.00%	0.00%	0.00%	0.00%	0.00%	2.01%
03:00	04:00	44.88%	0.00%	0.00%	0.00%	0.00%	0.00%	2.72%
04:00	05:00	34.04%	0.00%	0.00%	0.00%	0.00%	0.00%	13.67%
05:00	06:00	10.87%	0.00%	0.00%	0.00%	0.00%	0.00%	0.40%
06:00	07:00	12.95%	0.00%	0.00%	0.00%	0.00%	0.00%	1.22%
07:00	08:00	0.00%	0.00%	0.00%	0.00%	0.00%	0.00%	3.14%
08:00	09:00	37.29%	0.00%	0.00%	0.00%	0.00%	0.00%	0.00%
09:00	10:00	79.11%	0.00%	0.00%	0.00%	0.00%	0.00%	0.07%
10:00	11:00	95.51%	0.00%	0.00%	0.00%	0.00%	0.00%	1.36%
11:00	12:00	94.21%	0.00%	0.00%	0.00%	0.00%	0.00%	2.72%
12:00	13:00	73.39%	0.00%	0.00%	0.00%	0.00%	0.00%	4.00%
13:00	14:00	22.68%	0.00%	0.00%	0.00%	0.00%	0.00%	5.59%
14:00	15:00	40.45%	0.00%	0.00%	0.00%	0.00%	0.00%	0.22%
15:00	16:00	37.96%	0.00%	0.00%	0.00%	0.00%	0.00%	0.60%
16:00	17:00	59.01%	0.00%	0.00%	0.00%	0.00%	0.00%	3.84%
17:00	18:00	67.11%	0.00%	0.00%	0.00%	0.00%	0.00%	0.97%
18:00	19:00	75.22%	0.00%	0.00%	0.00%	0.00%	0.00%	7.28%
19:00	20:00	59.07%	0.00%	0.00%	0.00%	0.00%	0.00%	20.27%
20:00	21:00	67.61%	0.00%	0.00%	0.00%	0.00%	0.00%	8.57%
21:00	22:00	73.31%	0.00%	0.00%	0.00%	0.00%	0.00%	1.24%
22:00	23:00	55.14%	0.00%	0.00%	0.00%	0.00%	0.00%	2.86%
23:00	00:00	26.78%	0.00%	0.00%	0.00%	0.00%	0.00%	2.84%
2020-06-26								
00:00	01:00	18.17%	0.00%	0.00%	0.00%	0.00%	0.00%	0.66%
01:00	02:00	0.00%	0.00%	0.00%	0.00%	0.00%	0.00%	0.20%
02:00	03:00	0.00%	0.00%	0.00%	0.00%	0.00%	0.00%	0.40%
03:00	04:00	0.00%	0.00%	0.00%	0.00%	0.00%	0.00%	2.36%
04:00	05:00	0.00%	0.34%	0.00%	0.00%	0.00%	0.00%	4.47%
05:00	06:00	0.00%	0.00%	0.00%	0.00%	0.00%	0.00%	0.97%
06:00	07:00	4.06%	0.00%	0.00%	0.00%	0.00%	0.00%	1.20%

Time		Sinus		Ventricular		Supraventricular		Nondiagnostic part
From	To	Bradycardia	Tachycardia	Bradycardia	Tachycardia	Tachycardia	AFIB/AFL	
07:00	08:00	0.00%	0.00%	0.00%	0.00%	0.00%	0.00%	4.69%
08:00	09:00	0.00%	0.00%	0.00%	0.00%	0.00%	0.00%	0.00%
09:00	10:00	1.14%	0.00%	0.00%	0.00%	0.00%	0.00%	0.00%
10:00	11:00	48.63%	0.00%	0.00%	0.00%	0.00%	0.00%	0.82%
11:00	12:00	50.36%	0.00%	0.00%	0.00%	0.00%	0.00%	0.82%
12:00	13:00	0.00%	0.00%	0.00%	0.00%	0.00%	0.00%	2.48%
13:00	14:00	22.38%	0.00%	0.00%	0.00%	0.00%	0.00%	3.59%
14:00	15:00	52.40%	0.00%	0.00%	0.00%	0.00%	0.00%	2.81%
15:00	16:00	6.84%	0.00%	0.00%	0.00%	0.00%	0.00%	3.34%
16:00	17:00	19.75%	0.00%	0.00%	0.00%	0.00%	0.00%	1.03%
17:00	18:00	0.00%	0.00%	0.00%	0.00%	0.00%	0.00%	5.43%
18:00	19:00	0.00%	0.00%	0.00%	0.00%	0.00%	0.00%	0.00%
19:00	20:00	1.46%	0.00%	0.00%	0.00%	0.00%	0.00%	2.59%
20:00	21:00	12.76%	0.00%	0.00%	0.00%	0.00%	0.00%	2.56%
21:00	22:00	63.05%	0.00%	0.00%	0.00%	0.00%	0.00%	0.00%
22:00	23:00	28.89%	0.00%	0.00%	0.00%	0.00%	0.00%	1.04%
23:00	00:00	0.00%	0.00%	0.00%	0.00%	0.00%	0.00%	1.00%
2020-06-27								
00:00	01:00	0.00%	0.00%	0.00%	0.00%	0.00%	0.00%	0.60%
01:00	02:00	0.00%	0.00%	0.00%	0.00%	0.00%	0.00%	7.24%
02:00	03:00	0.00%	0.00%	0.00%	0.00%	0.00%	0.00%	0.63%
03:00	04:00	0.00%	0.00%	0.00%	0.00%	0.00%	0.00%	1.63%
04:00	05:00	0.00%	0.00%	0.00%	0.00%	0.00%	0.00%	0.00%
05:00	06:00	16.25%	0.00%	0.00%	0.00%	0.00%	0.00%	0.40%
06:00	07:00	30.54%	0.00%	0.00%	0.00%	0.00%	0.00%	0.82%
07:00	08:00	0.00%	0.00%	0.00%	0.00%	0.00%	0.00%	1.46%
08:00	09:00	0.31%	0.00%	0.00%	0.00%	0.00%	0.00%	0.20%
09:00	10:00	14.37%	0.00%	0.00%	0.00%	0.00%	0.00%	0.22%
10:00	11:00	9.09%	6.53%	0.00%	0.00%	0.00%	0.00%	0.84%
11:00	12:00	0.34%	0.00%	0.00%	0.00%	0.00%	0.00%	0.63%
12:00	13:00	14.29%	0.00%	0.00%	0.00%	0.00%	0.00%	1.57%
13:00	14:00	67.54%	0.00%	0.00%	0.00%	0.00%	0.00%	2.78%
14:00	15:00	46.20%	0.00%	0.00%	0.00%	0.00%	0.00%	44.40%
15:00	15:10	38.19%	0.00%	0.00%	0.00%	0.00%	0.00%	0.00%

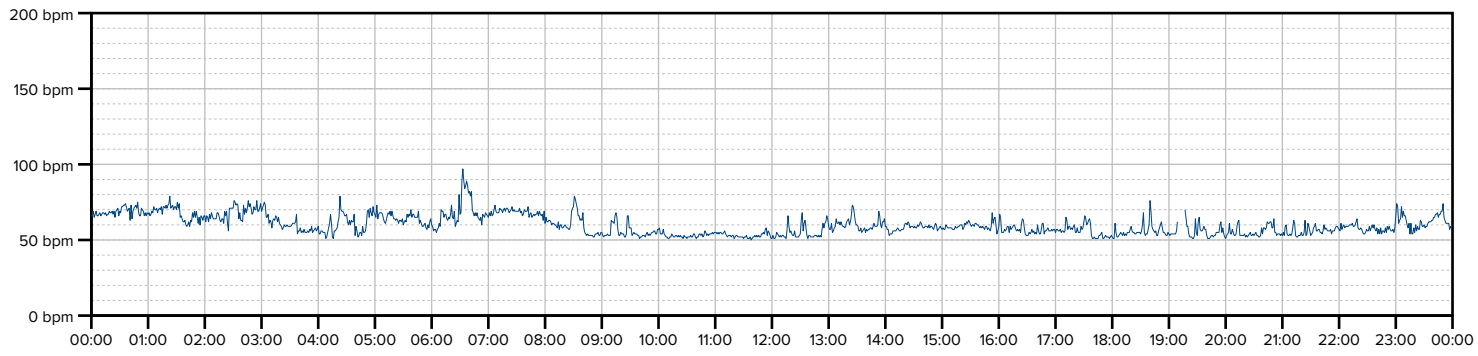
Heart rate details

Heart rate		Sinus tachycardia		Sinus bradycardia	
Average rate per min	66 bpm	Longest	1 min 06 s	Longest	8 min 22 s
Fastest rate per min	107 bpm starting at 07:16 (day 1)	Fastest N-N	114 bpm starting at 04:11 (day 3)	Slowest N-N	30 bpm starting at 12:45 (day 4)
Slowest rate per min	51 bpm starting at 11:38 (day 2)	Total time	9 min 29 s	Total time	20 h 40 min 24 s

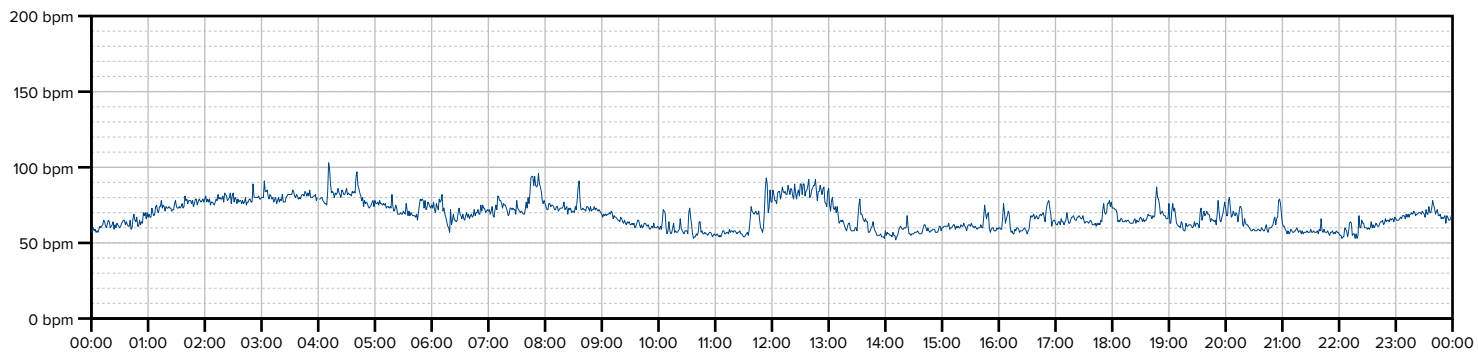
Heart rate plot (day 1)



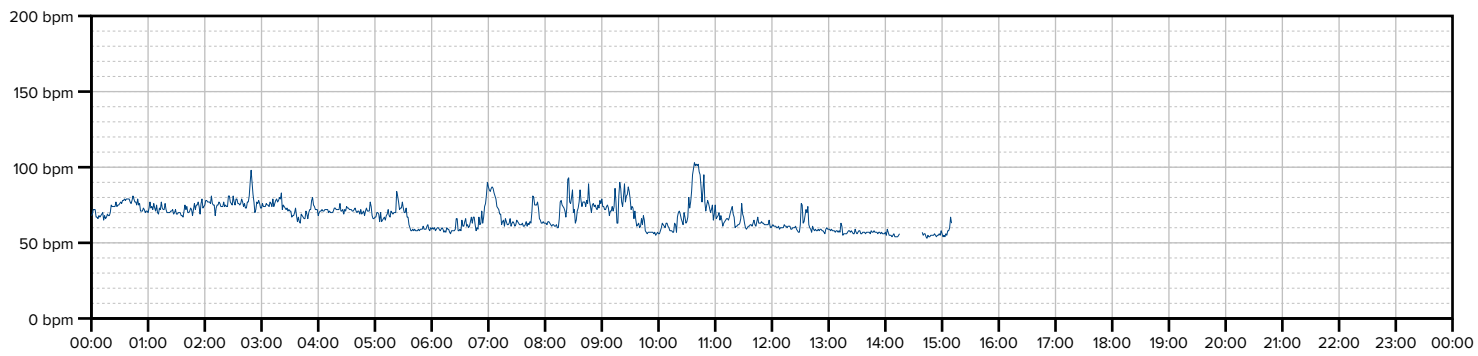
Heart rate plot (day 2)



Heart rate plot (day 3)



Heart rate plot (day 4)



Details of arrhythmia

Ventricular

Total V beats	10383
Max V/min	29 starting at 07:18 (day 3)
Max V/hour	697 starting at 04:01 (day 3)
Couplets	158
Fastest	169 bpm starting at 03:40 (day 3)
Bigeminies	430
Longest	36 s starting at 06:45 (day 4)
Trigeminies	23
Longest	12 s starting at 08:37 (day 3)
Tachycardias	0
Longest	-
Fastest	-

Supraventricular

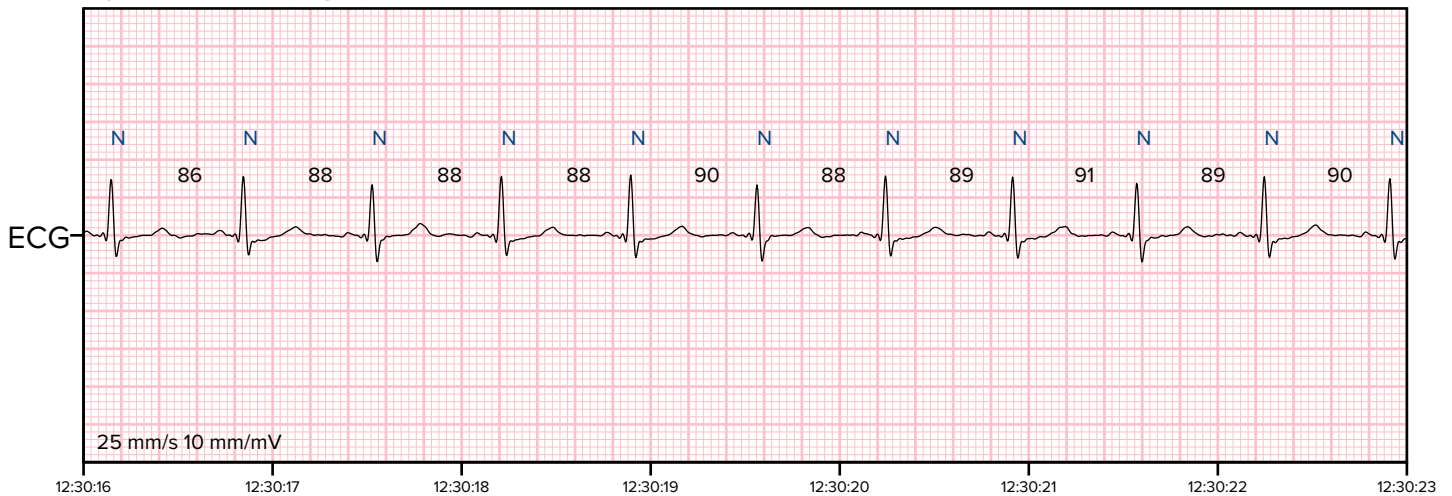
Total SV beats	85
Max SV/min	3 starting at 23:19 (day 1)
Max SV/hour	5 starting at 23:00 (day 1)
Couplets	2
Fastest	154 bpm starting at 02:33 (day 4)
Bigeminies	0
Longest	-
Trigeminies	0
Longest	-
Tachycardias	0
Longest	-
Fastest	-

Atrial fibrillation or flutter

Total time	-	Longest episode	-
Average episode	-	Shortest episode	-

Selected ECG events

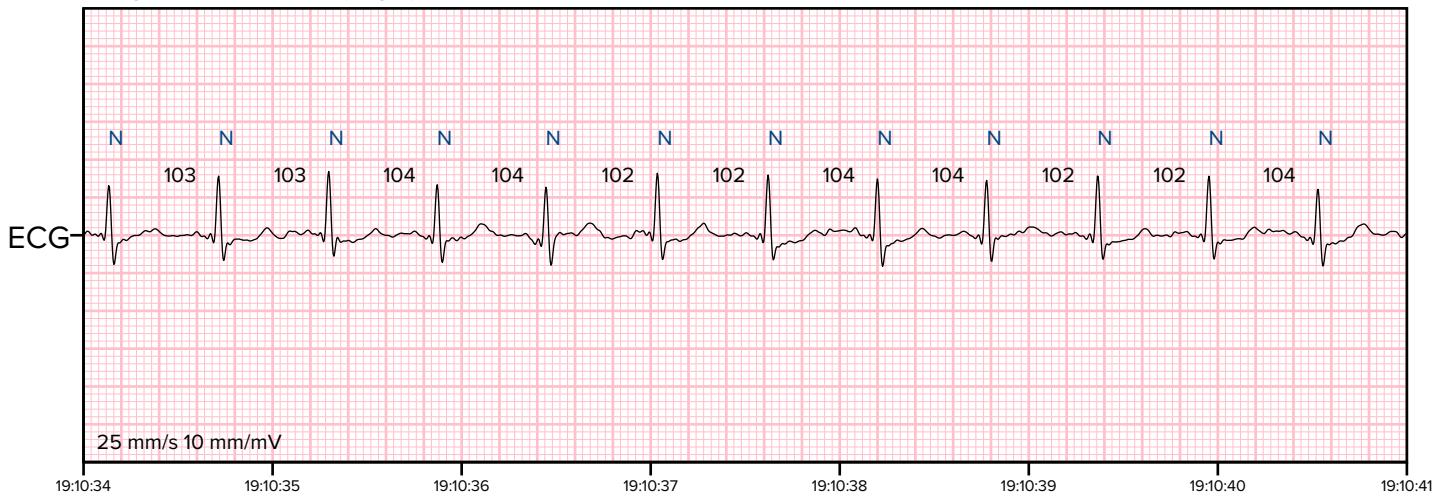
Sinus rhythm: 12:30:16 (day 3)



Sinus tachycardia: 07:37:06 (day 1)



Sinus tachycardia: 19:10:34 (day 1)



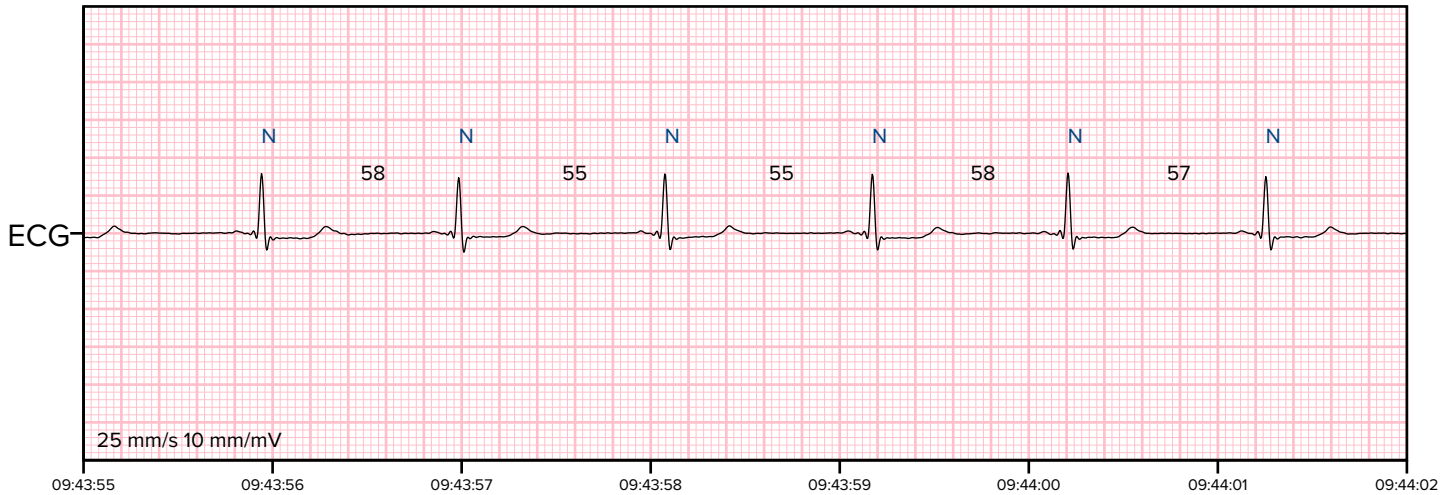
Sinus tachycardia: 10:38:42 (day 4)



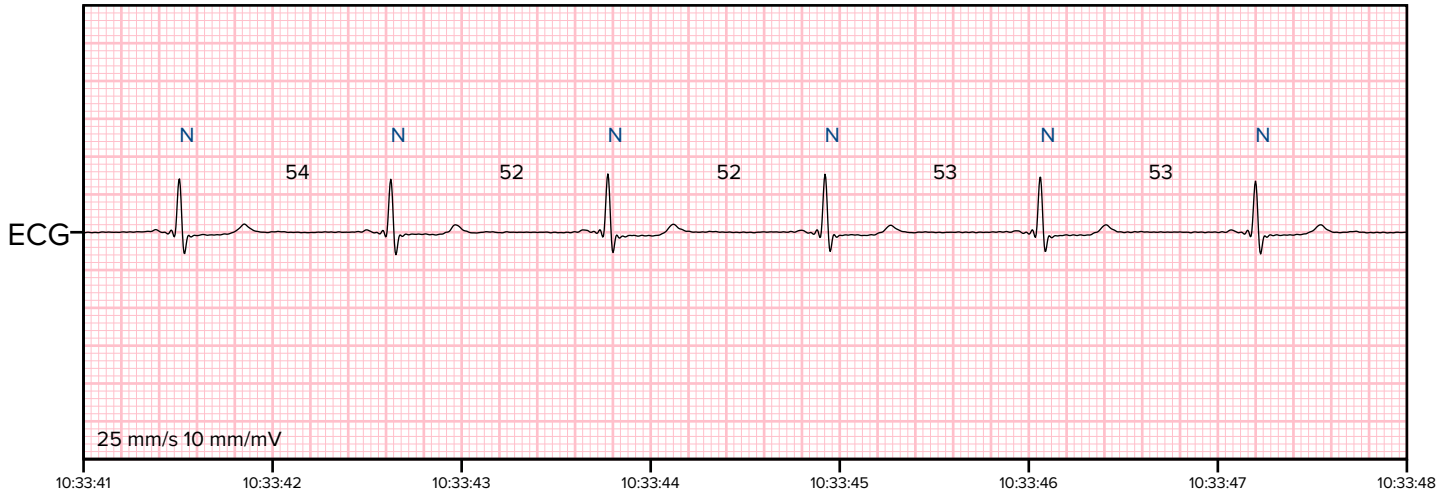
Sinus tachycardia: 10:40:04 (day 4)



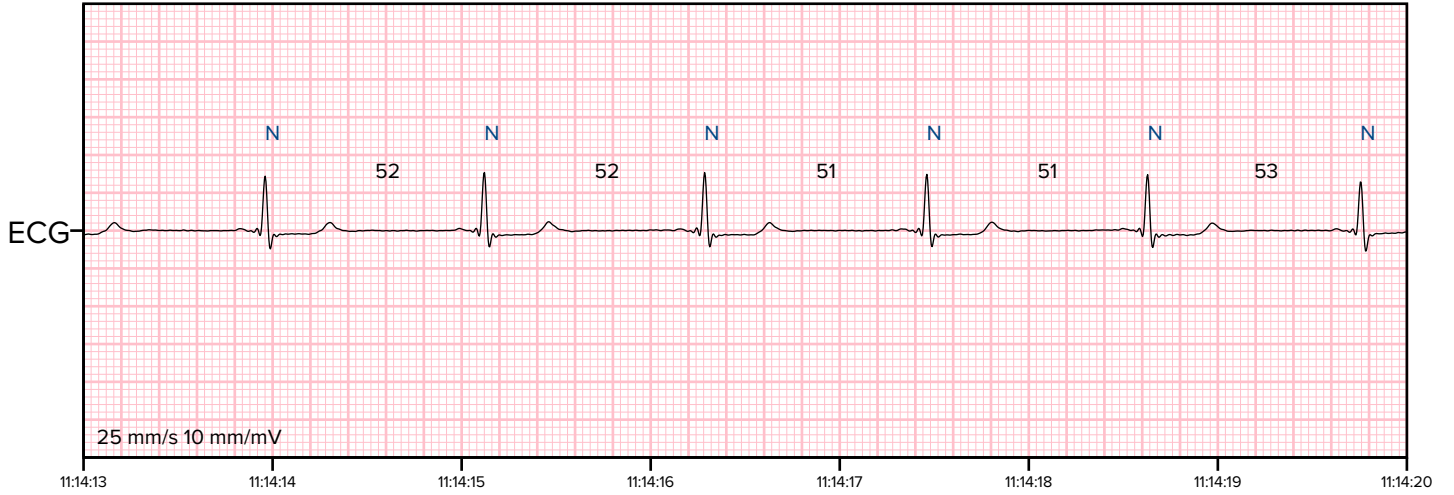
Sinus bradycardia: 09:43:55 (day 2)



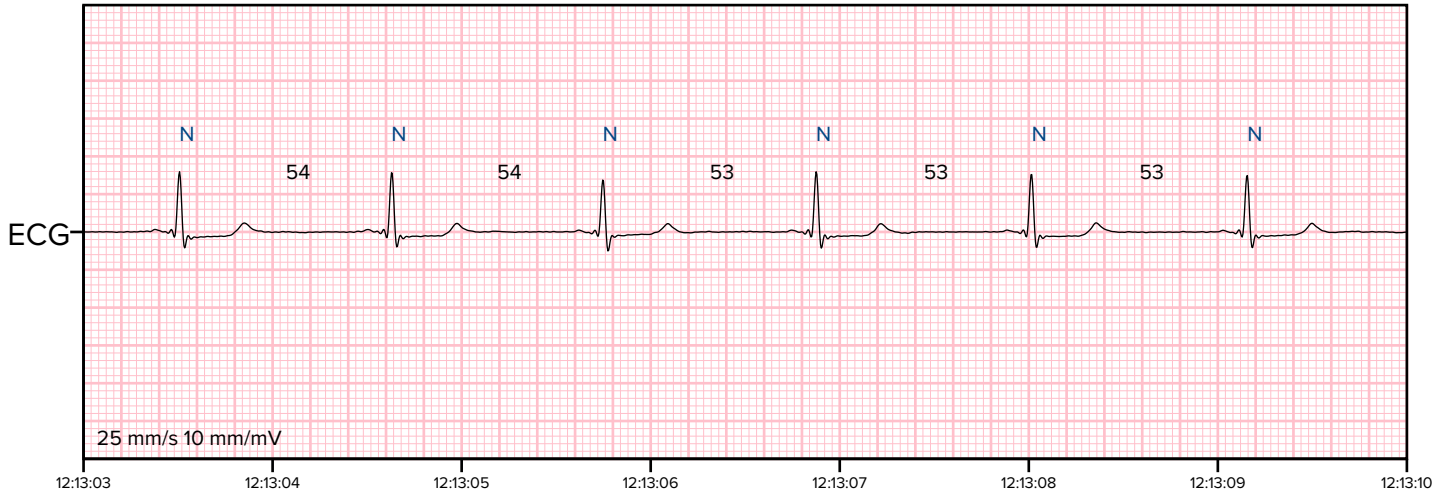
Sinus bradycardia: 10:33:41 (day 2)



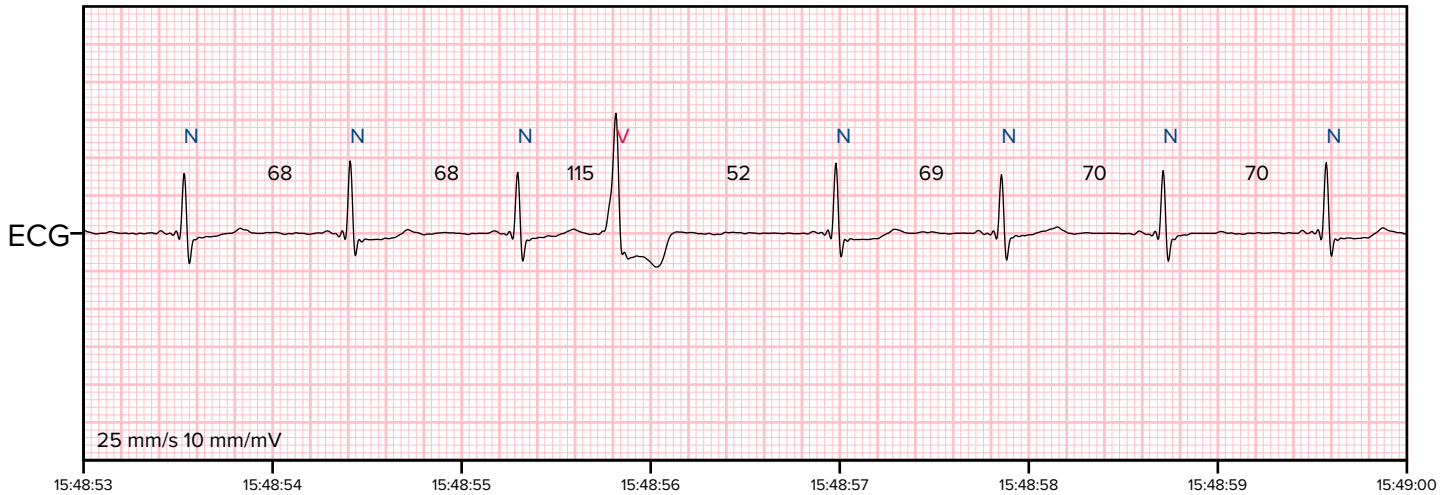
Sinus bradycardia: 11:14:13 (day 2)



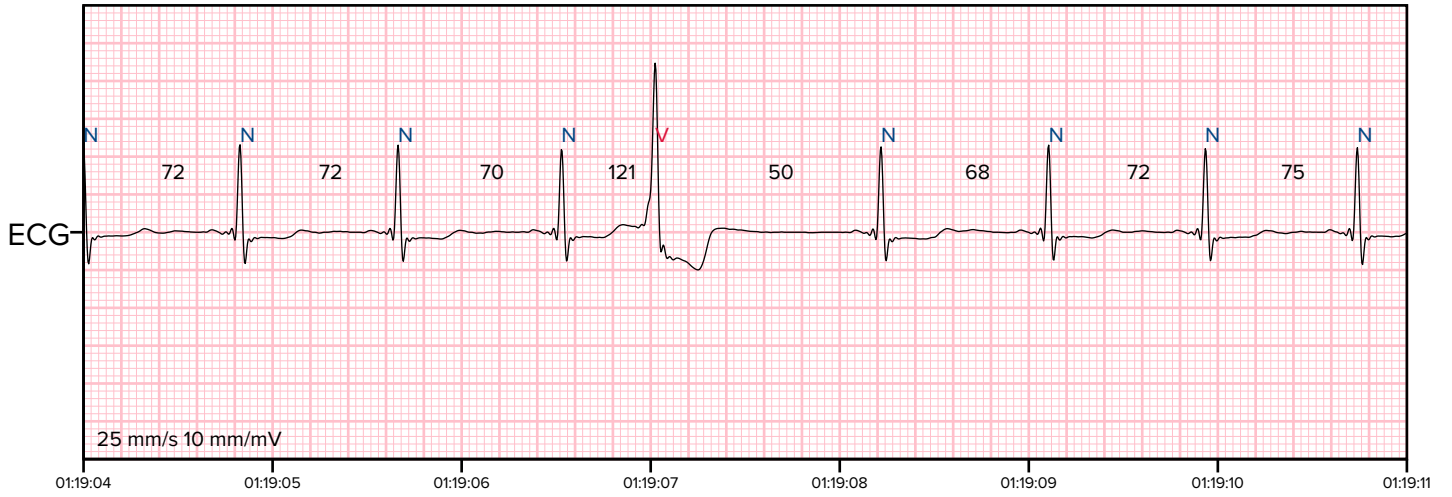
Sinus bradycardia: 12:13:03 (day 2)



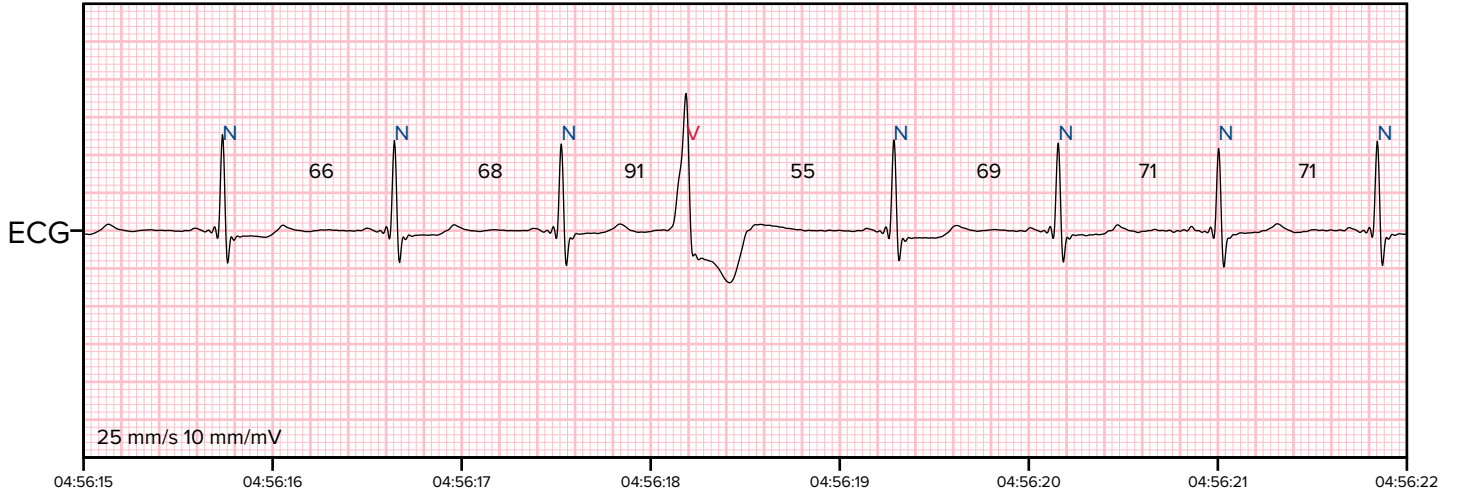
Ventricular beat: 15:48:53 (day 1)



Ventricular beat: 01:19:04 (day 2)



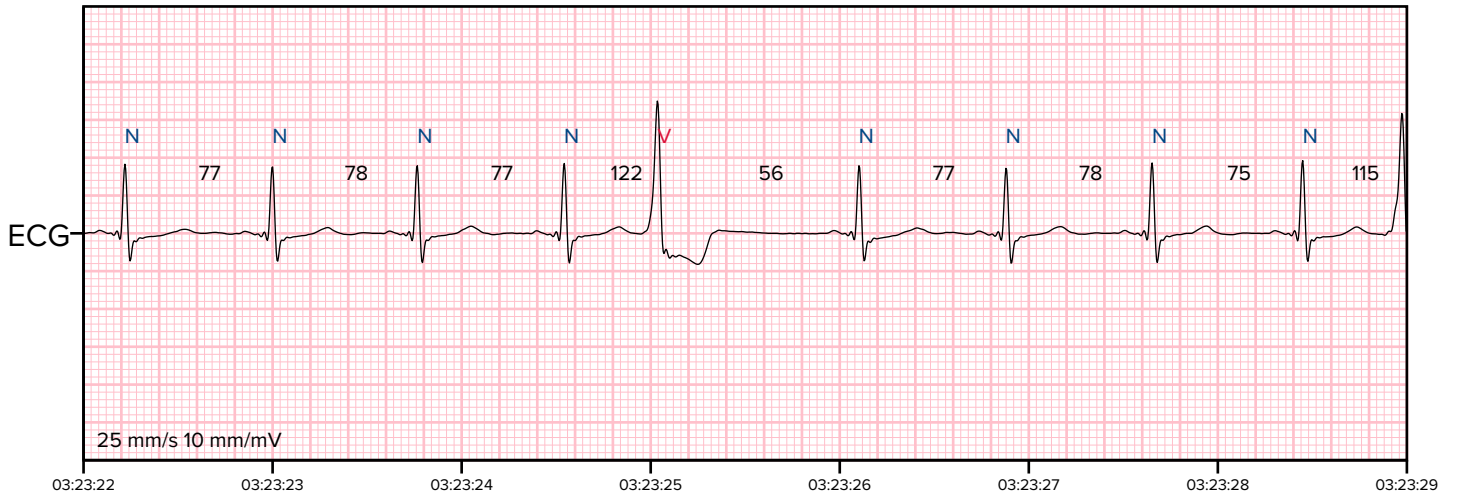
Ventricular beat: 04:56:15 (day 2)



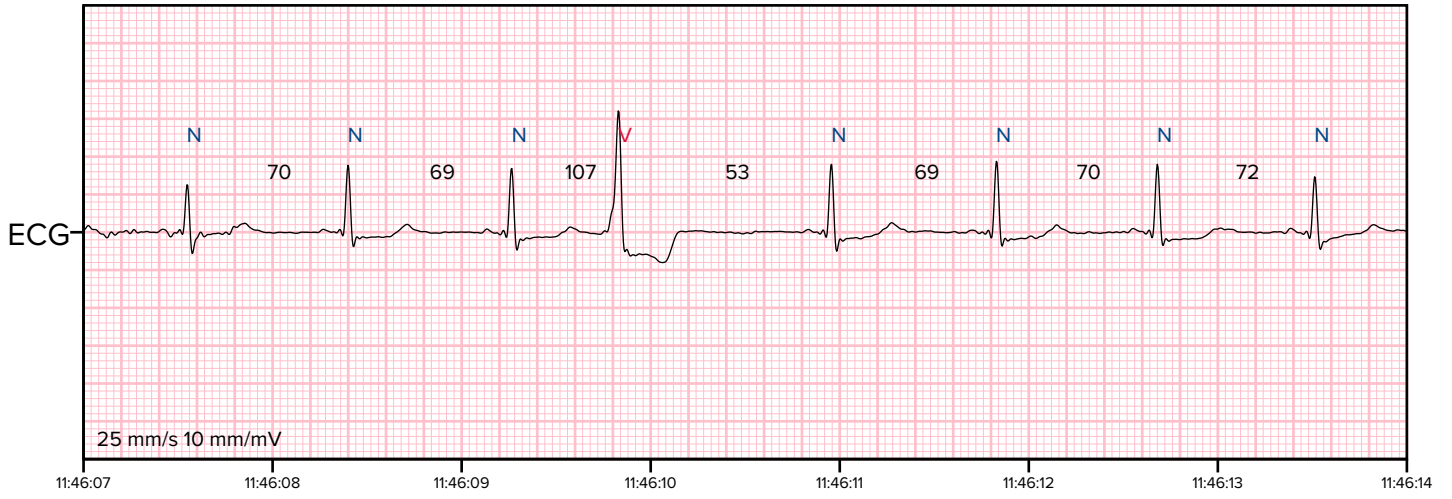
Ventricular beat: 21:58:56 (day 2)



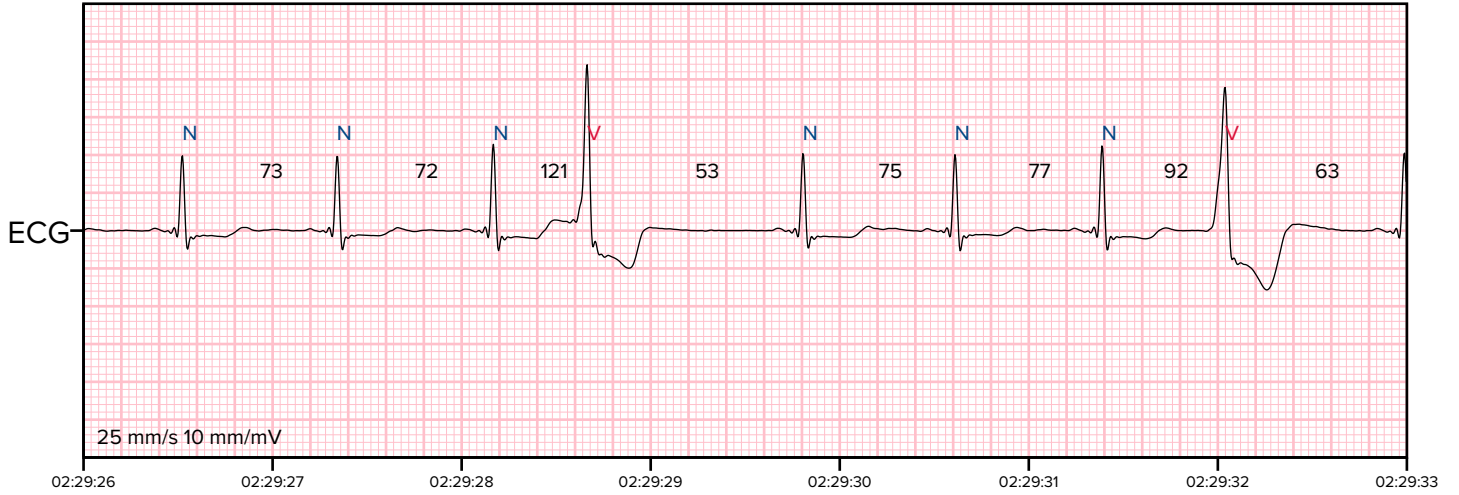
Ventricular beat: 03:23:22 (day 3)



Ventricular beat: 11:46:07 (day 3)



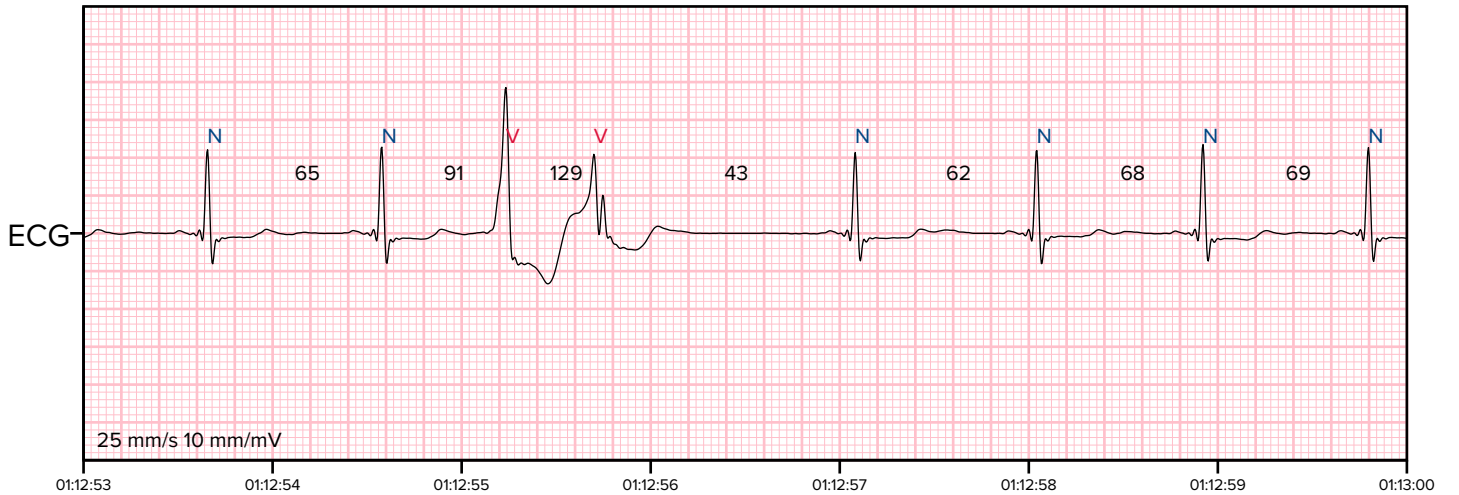
Ventricular beat: 02:29:26 (day 4)



Ventricular beat: 06:39:12 (day 4)



Ventricular couplet: 01:12:53 (day 2)



Ventricular couplet: 03:03:05 (day 3)



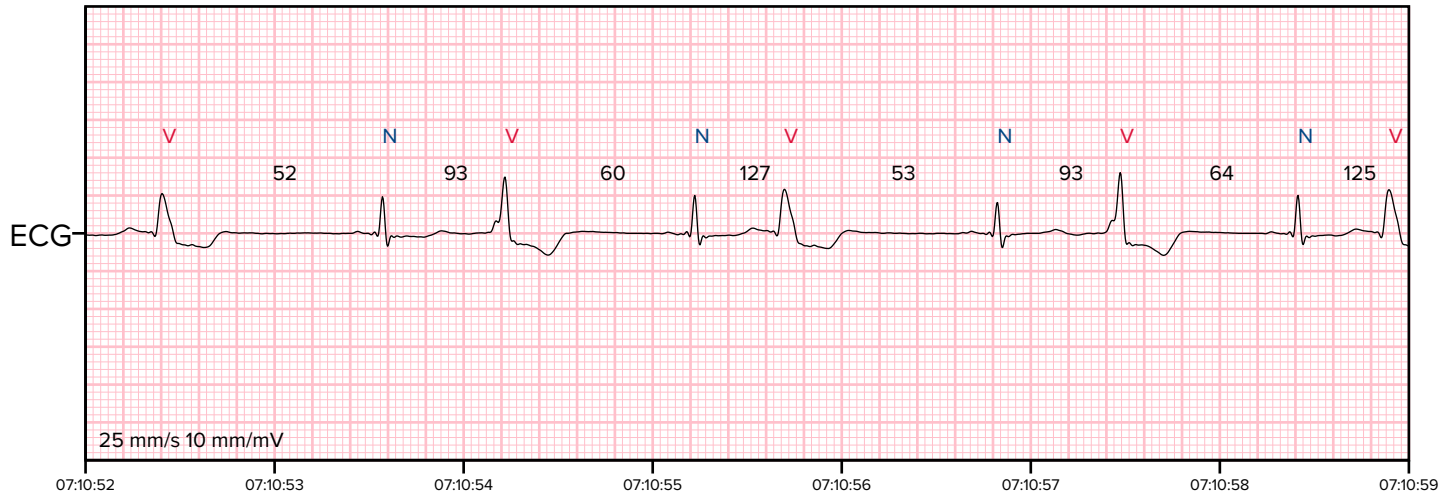
Ventricular couplet: 02:30:30 (day 4)



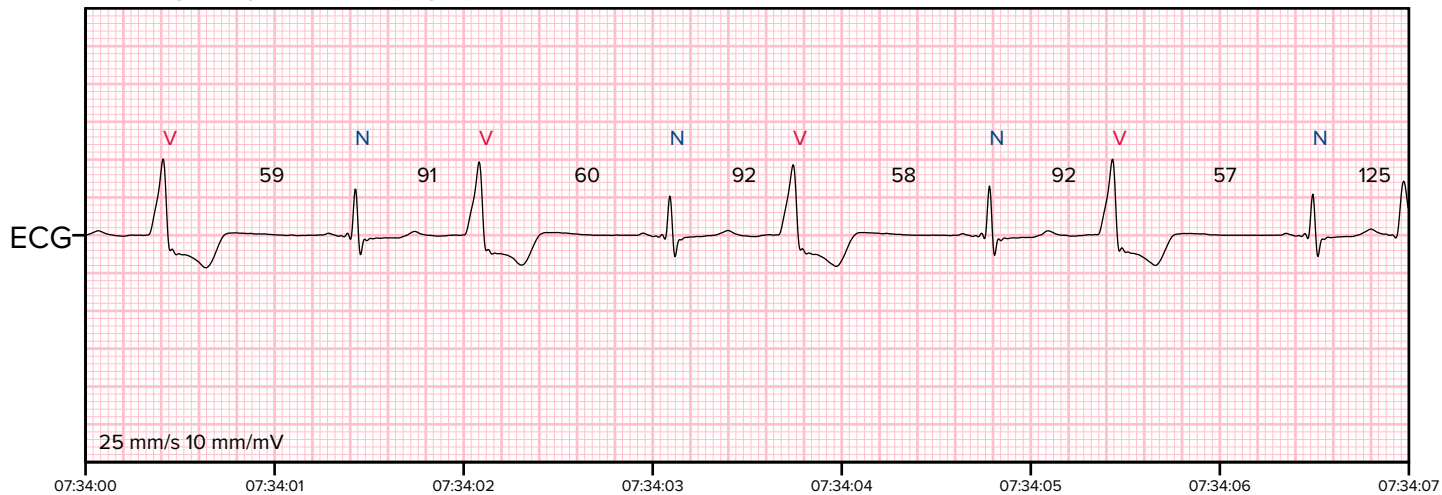
Ventricular couplet: 02:45:44 (day 4)



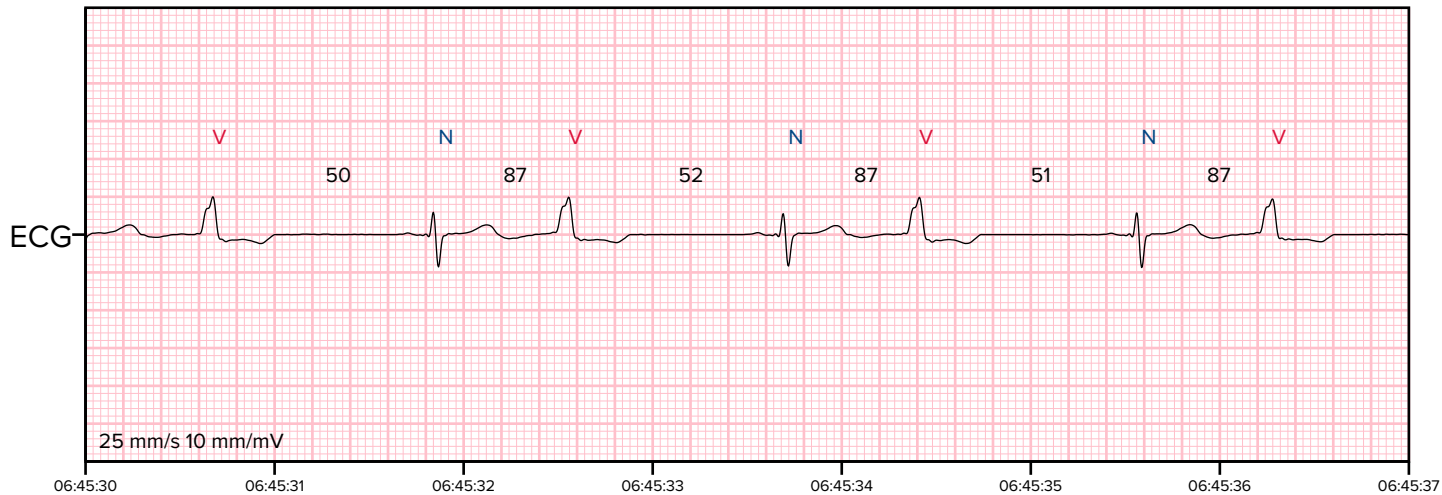
Ventricular bigeminy: 07:10:52 (day 3)



Ventricular bigeminy: 07:34:00 (day 3)



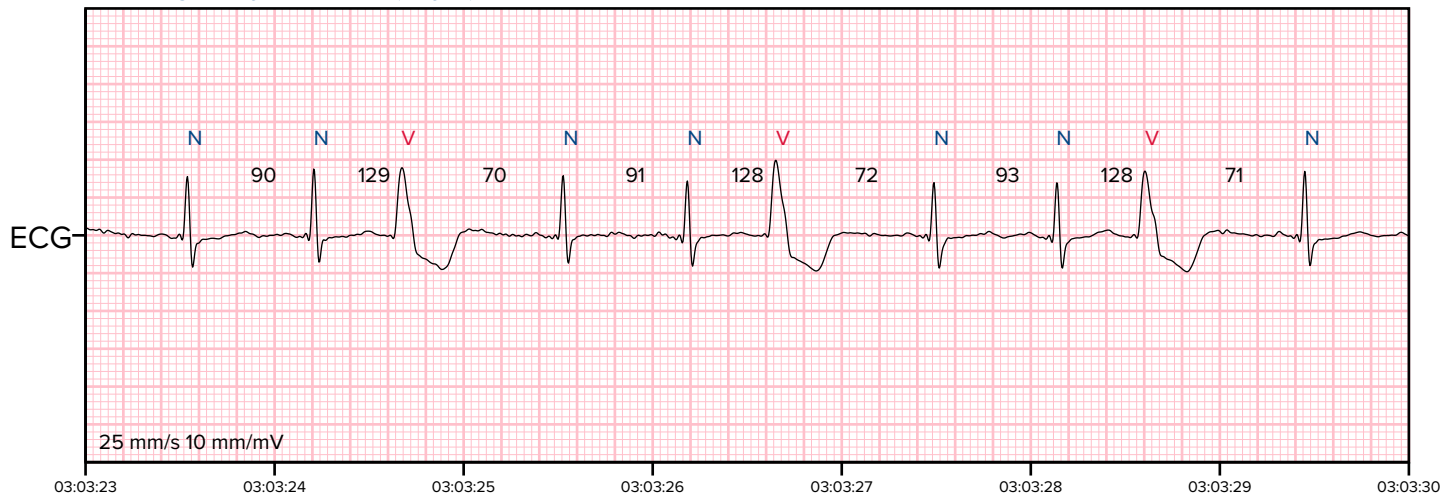
Ventricular bigeminy: 06:45:30 (day 4)



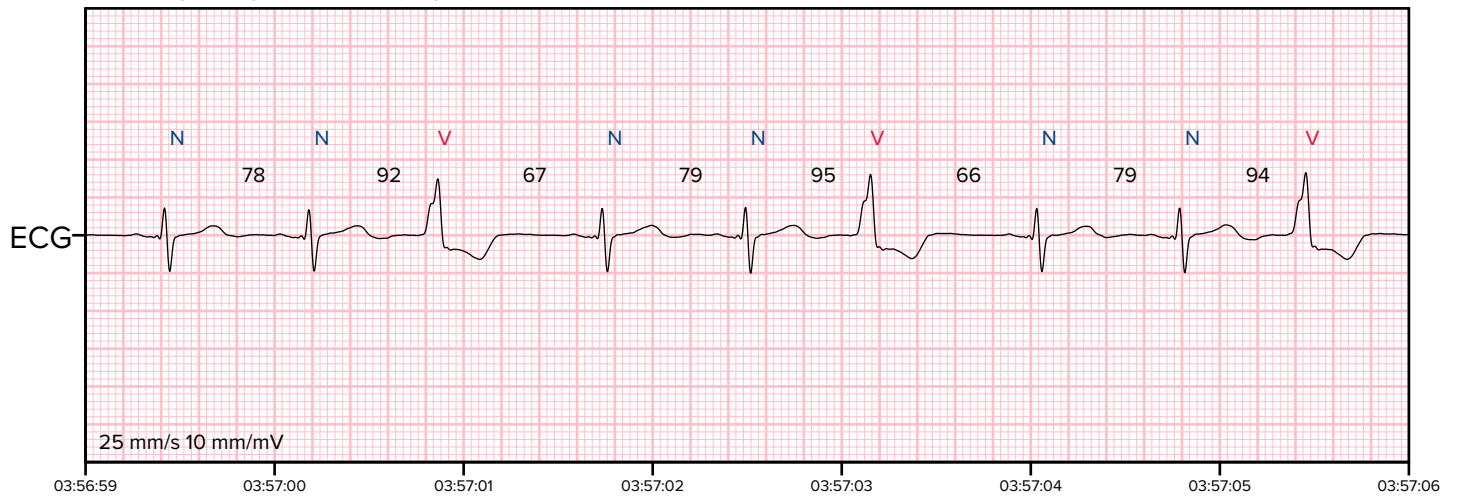
Ventricular bigeminy: 06:57:10 (day 4)



Ventricular trigeminy: 03:03:23 (day 3)



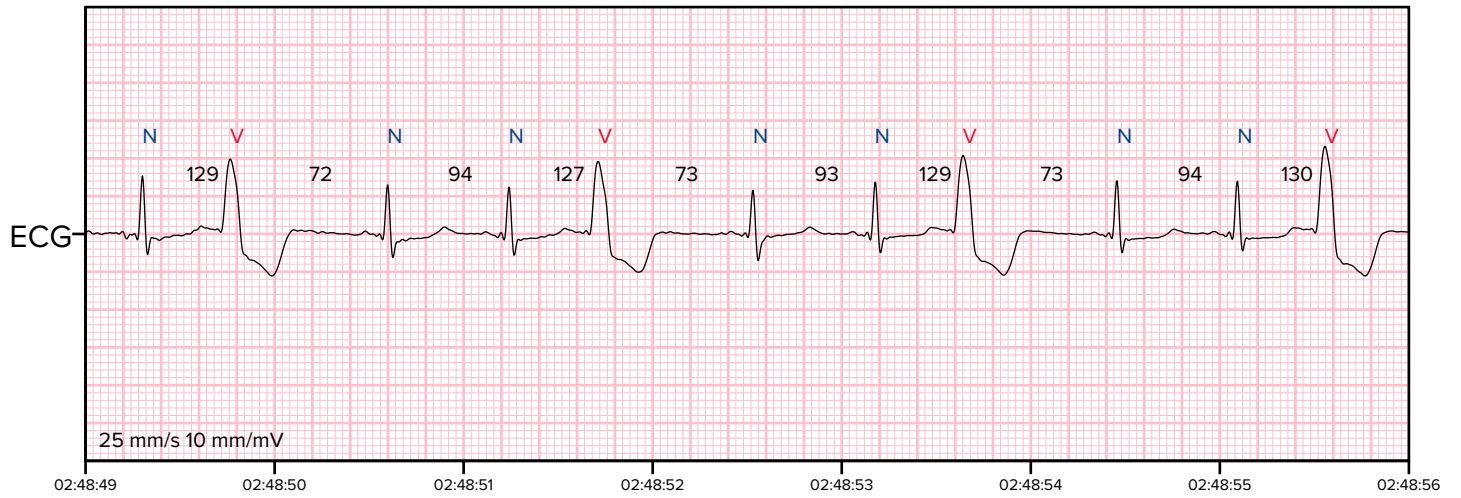
Ventricular trigeminy: 03:56:59 (day 3)



Ventricular trigeminy: 08:38:02 (day 3)



Ventricular trigeminy: 02:48:49 (day 4)



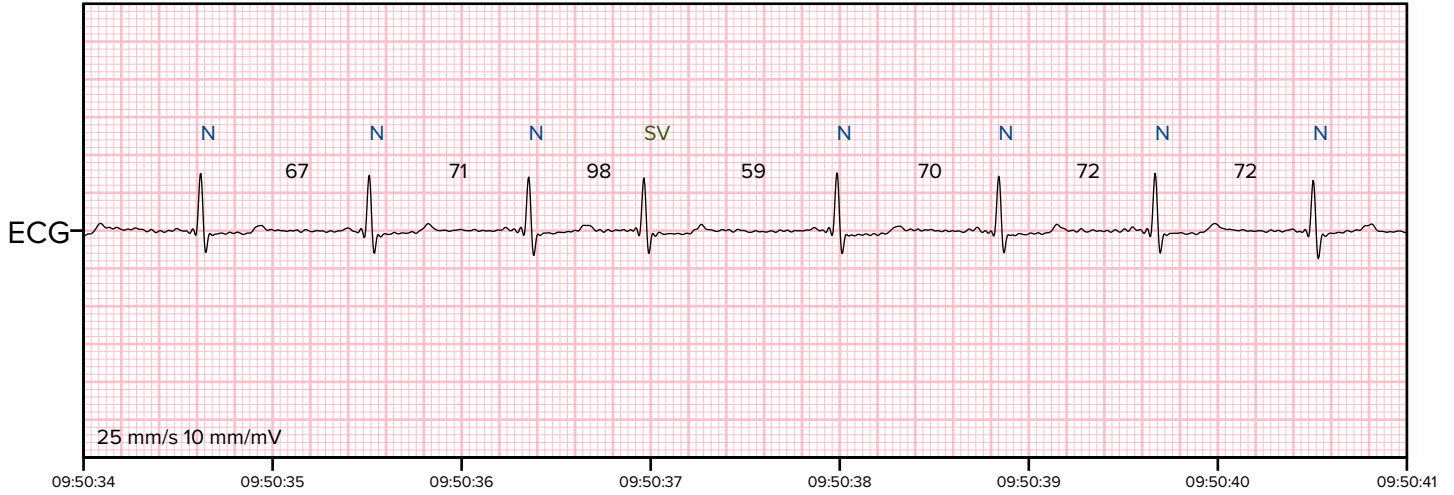
Idioventricular rhythm: 02:30:07 (day 4)



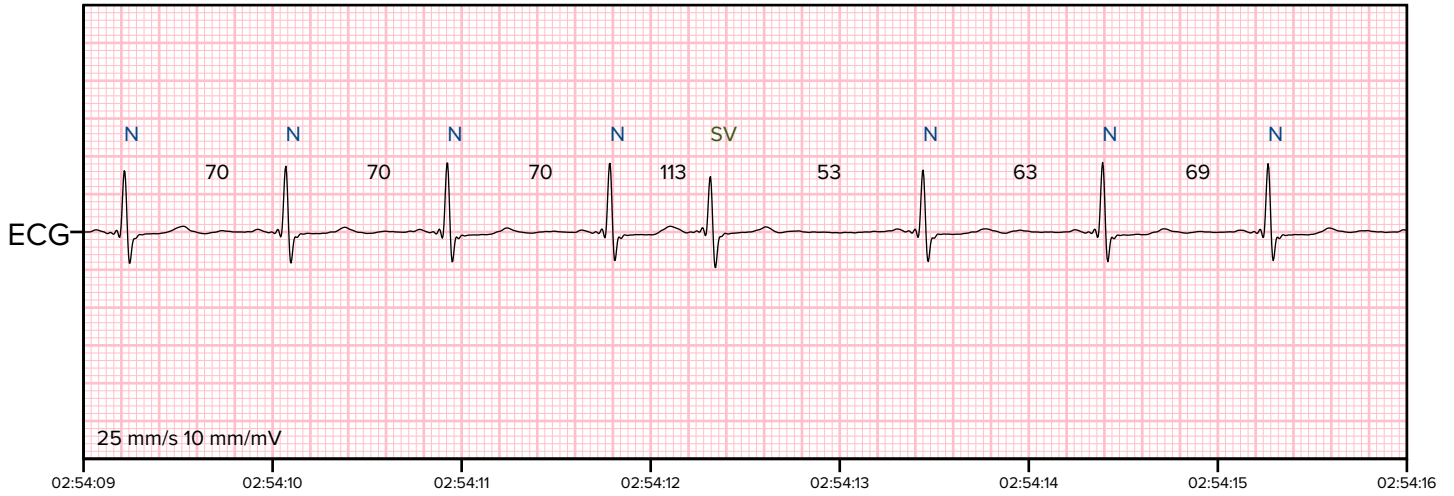
Idioventricular rhythm: 02:30:58 (day 4)



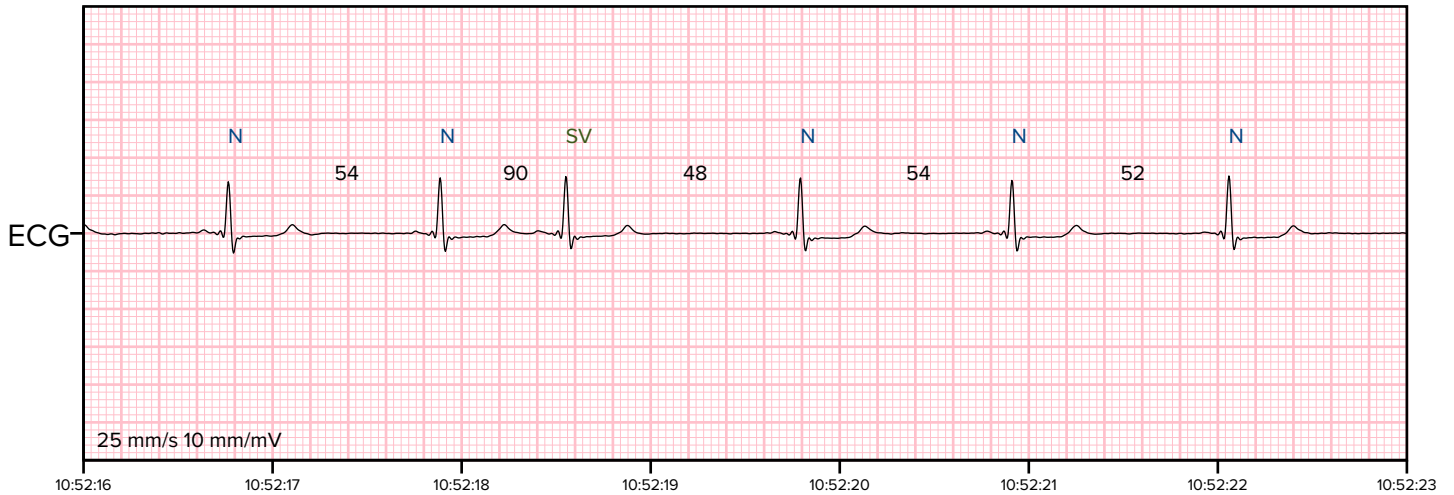
Supraventricular beat: 09:50:34 (day 1)



Supraventricular beat: 02:54:09 (day 2)



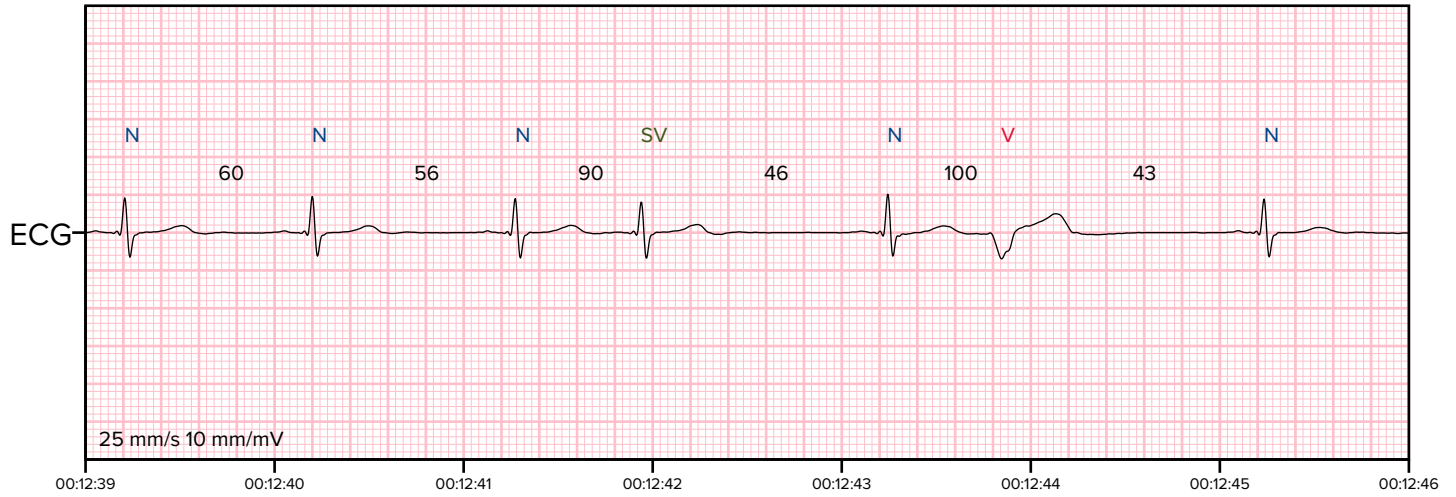
Supraventricular beat: 10:52:16 (day 2)



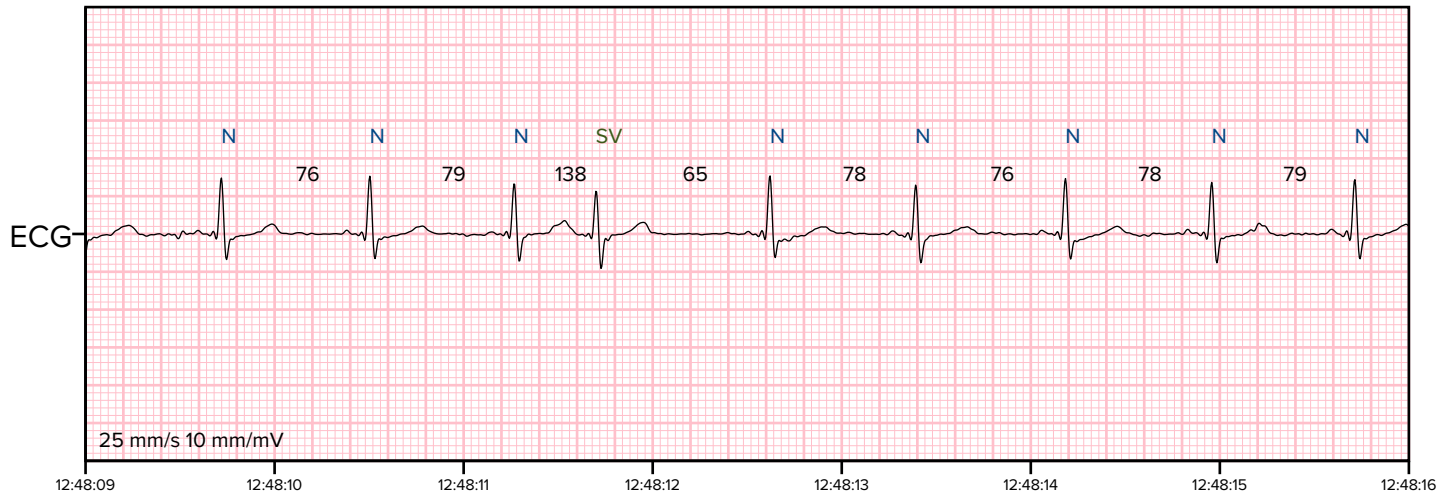
Supraventricular beat: 22:14:33 (day 2)



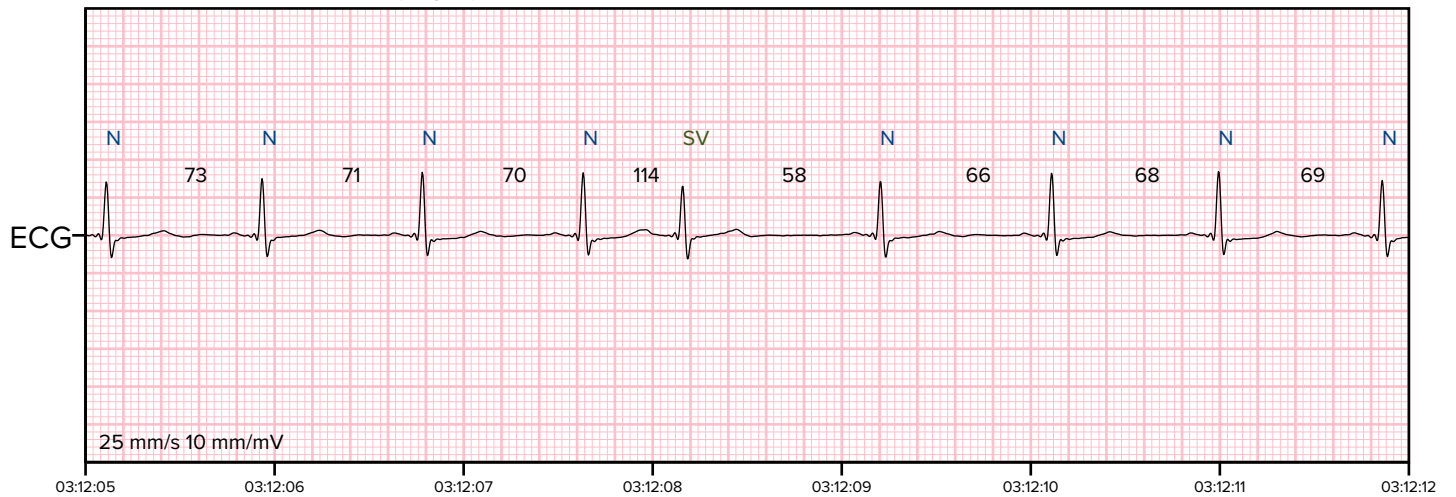
Supraventricular beat: 00:12:39 (day 3)



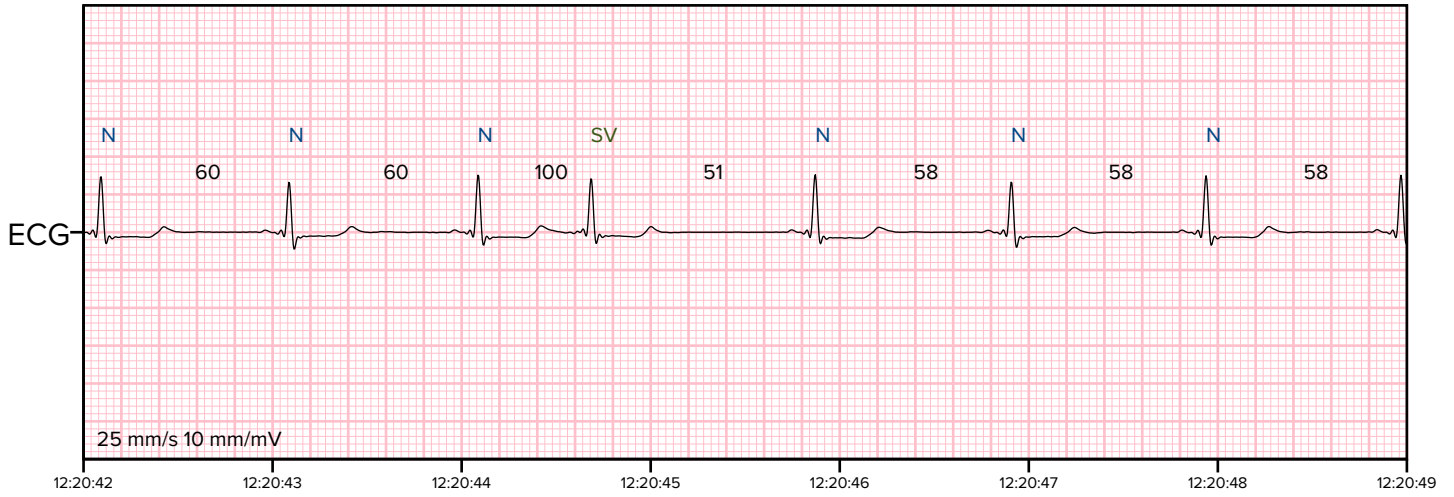
Supraventricular beat: 12:48:09 (day 3)



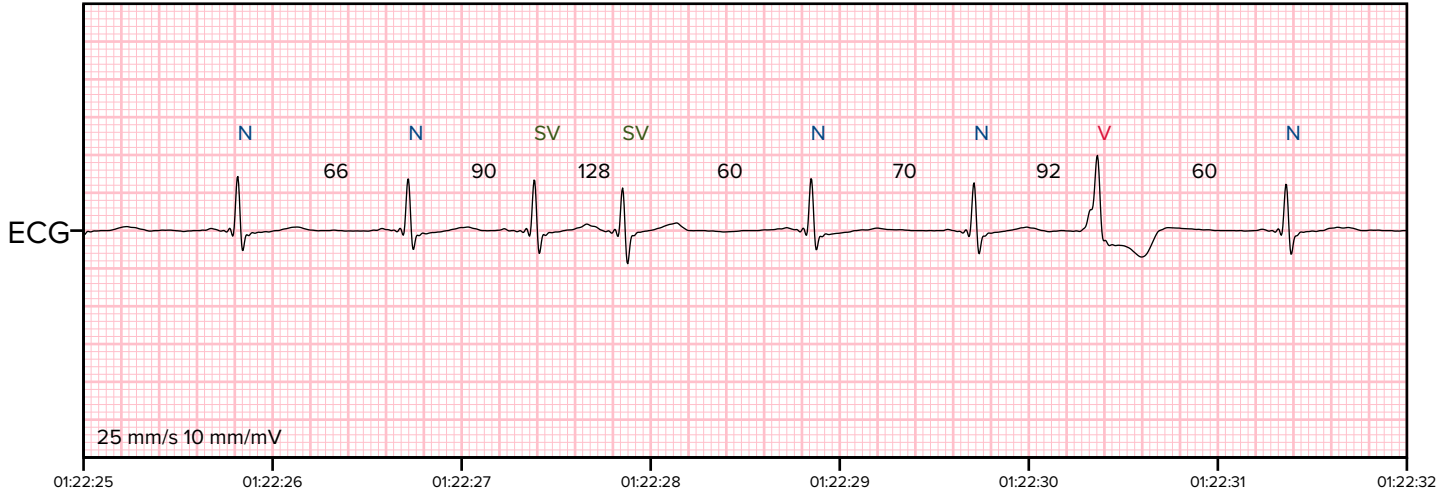
Supraventricular beat: 03:12:05 (day 4)



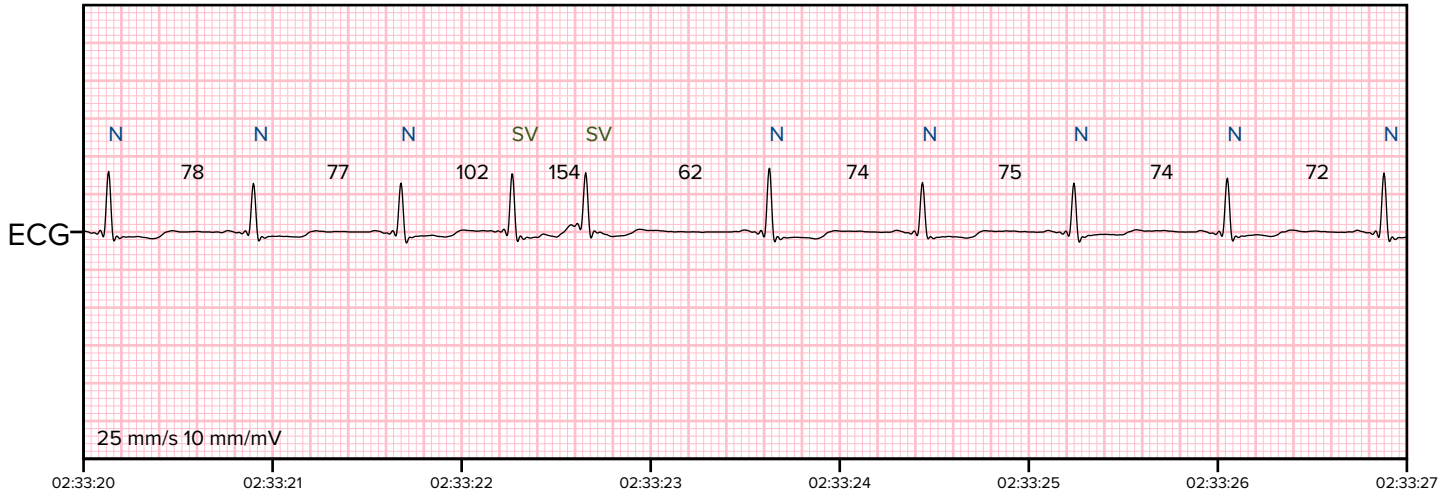
Supraventricular beat: 12:20:42 (day 4)



Supraventricular couplet: 01:22:25 (day 4)



Supraventricular couplet: 02:33:20 (day 4)



Algorithm settings

Minimal pause duration	2000 ms
All heart rate values	averaged per minute
Sinus tachycardia	consecutive normal beats at a rate of > 100 bpm lasting longer than 10 s
Sinus bradycardia	consecutive normal beats at a rate of < 60 bpm lasting longer than 10 s
Ventricular salvo	3-7 consecutive complexes of ventricular beats at a rate of > 100 bpm
Ventricular tachycardia	more than 7 consecutive complexes originating from ventricles at a rate of > 100 bpm
Ventricular bradycardia	three or more consecutive complexes originating from ventricles at a rate of < 50 bpm
Supraventricular salvo	3-7 consecutive complexes of supraventricular beats at a rate of > 100 bpm
Supraventricular tachycardia	more than 7 consecutive complexes of supraventricular beats at a rate of > 100 bpm
AFIB/AFL	atrial fibrillation or atrial flutter lasting longer than 30s